

THE WEEKLY MO'OLELO

Wednesday, August 14, 2024



Keep up with the latest news from across Navy Region Hawaii. Click on any story to read the full version online. Some networks do not allow access to embedded links. For those readers, right click the PDF and open in your internet browser.

Upcoming Events

- Extended Drinking Water Monitoring Booths: Aug. 21 at Moanalua Terrace Community Center, 2500 Radford Drive, from 5 - 7 p.m.; Aug. 28 at Kapilina Night Market, 5440 Edgewater Drive, from 4 - 8 p.m.; Aug. 29 at Pearl City NEX Mini Mart, 794 Lehua Ave., from 10 a.m. - 1 p.m.

Navy Closure Task Force Holds Open House on Aug. 21

Navy Closure Task Force-Red Hill hosts an Open House on Aug. 21 from 5-7 p.m. at Moanalua Terrace Community Center to update the public on efforts to clean and close the storage tanks at the Red Hill Bulk Fuel Storage Facility. Water quality experts will discuss the Extended Drinking Water Monitoring plan and representatives from the EPA, UH's Red Hill Independent Health Registry and the Water Quality Action Team will be on hand to answer questions.



Women's Equality Day Spotlight: Fed Fire's Allison Nihei

When the 19th amendment was ratified on Aug. 26, 1920, millions of women in the U.S. won the right to vote. On Women's Equality Day, we honor the hard-fought quest for universal suffrage and celebrate the monumental progress women have made over last century. This month, we are spotlighting the exceptional women at Navy Region Hawaii starting with Allison Nihei, the Federal Fire Department's first female regional training chief.



Panel Discusses Kolekole Pass Emergency Access at MAC Conference

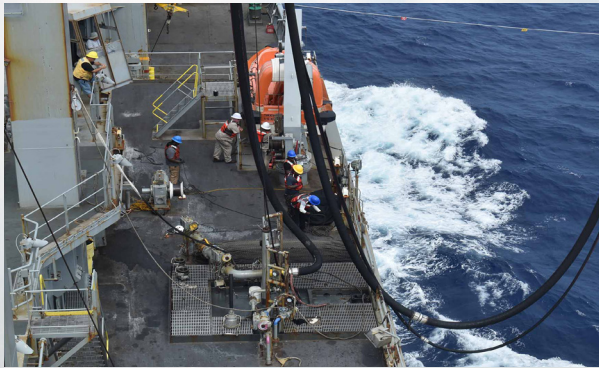
Joint Base Pearl Harbor-Hickam Commander Capt. Sam White highlighted the role of Kolekole Pass as an emergency access route during a panel discussion at last week's Bi-Annual State of the Indo-Pacific luncheon hosted by the Military Affairs Council. Also on the panel were Col. (Retired) James Barros of the Hawaii Emergency Management Agency, David Roudybush of Army Garrison Hawaii and Hawaii Department of Transportation Director Ed Sniffen. The MAC advocates and liaisons with military commands in Hawaii.





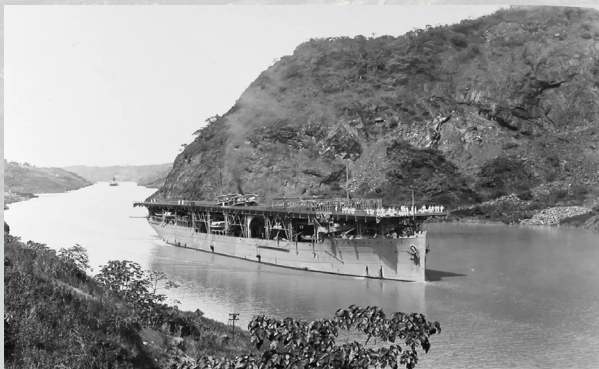
How Plants Can Bring a Historical Landscape to Life

Working with Scientists in Parks, a program that partners early career scientists with projects in National Park units, Claire Kubacki began work on a plant program that will benefit the historic and cultural landscape of Pearl Harbor National Memorial. The goals of the project are to take cuttings of the historic trees and shrubs around the chief petty officer bungalows in order to propagate the very plants that stood witness to the attack on Pearl Harbor.



MSC Ships Provide Logistics Support During RIMPAC 2024

During Exercise Rim of the Pacific 2024, the Military Sealift Command (MSC) combat logistic fleet serviced as many as 10 U.S. Navy and foreign navy ships a day. During the four-week exercise, MSC fleet replenishment oiler USNS Pecos (T-AO 197) and MSC dry cargo/ammunition ship USNS Washington Chambers (T-AKE 11) delivered nearly 4 million gallons of diesel ship fuel, more than 1 million gallons of JP5 aviation fuel and 1,256 pallets of food and supplies.



This Week in History: August 15, 1919

The Panama Canal was completed on August 15, 1919, thrusting the new naval base at Pearl Harbor into the forefront of America's Pacific strategy. A decade earlier, in 1909, the Navy's annual report stated, "The Pacific Ocean is growing in importance and, with the opening of the Panama Canal, will undoubtedly become the scene of greater commercial and naval activity. Our main naval base in the Pacific Ocean should be established at Pearl Harbor, Hawaii."

Photo: America's first aircraft carrier, USS Langley (CV-1), transits the Panama Canal in 1924 enroute to join the Pacific Battle Fleet.

WHO'OKELE
FOR THE NAVY AND AIR FORCE TEAMS IN HAWAII

Wai Momi

NAVY REGION PRODUCTIONS

Navy Region Hawaii produces a digital magazine and a monthly lifestyle show for Navy and Air Force members and their families in Hawaii. Ho'okele and Wai Momi include news and feature stories, command information and community photos produced by Navy Region Hawaii Public Affairs. Current and past editions of both are available for viewing on the Navy Region Hawaii website and DVIDS.

FOR ACCESS TO NEWS, VIDEOS, AND PHOTOS FROM NAVY REGION HAWAII AND OTHER SERVICES, VISIT DEFENSE VISUAL INFORMATION DISTRIBUTION SERVICE (DVIDS), THE CNRH WEBSITE, OR FOLLOW US ON SOCIAL MEDIA.



/NavyRegionHawaii/
/JBPHH
/PacificMissileRangeFacility



Commander-navy-region-hawaii



/C-NRH /JBPHH
/PMRF /NCTF-RH



/jointbasephh



/JointBasePHH
/NavRegHawaii



cnrh.cnic.navy.mil/
navyclosurerelease.navy.mil/