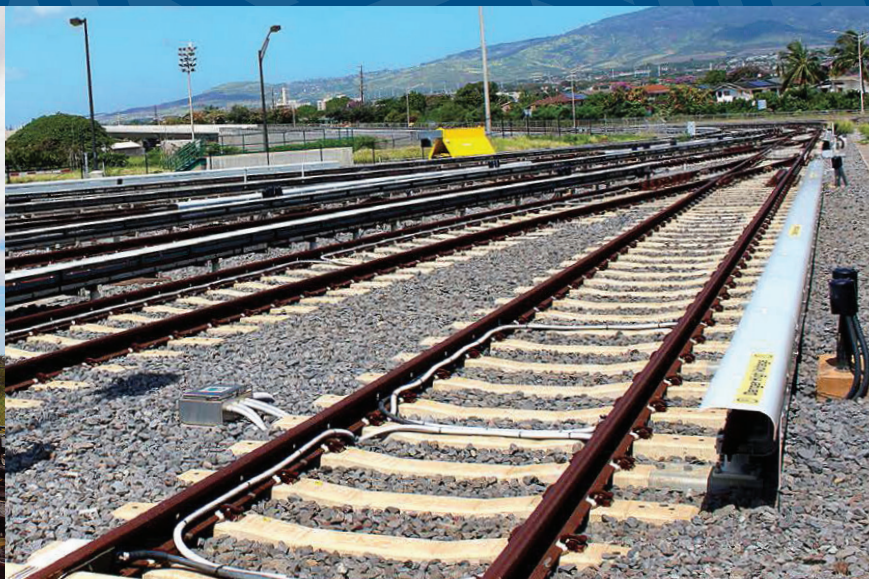


# Rail Safety Hazards

The Honolulu Authority for Rapid Transportation (HART) is working to make the Honolulu rail system safe for everyone. Rail stations may seem complete, but are still active work zones. Entry to all rail stations and facilities is strictly prohibited.



## DANGER



Keep out of the Rail Operations Center (ROC), stations, and all other work sites.



Do not cut or hop fences to enter secured facilities.



Keep off the rail track. The third rail is energized 24/7 with 750 volts of electricity. **Touching the third rail will result in death.**



The automated trains move in any direction at any time without warning.



The system is equipped with 1,500+ security cameras.

**Trespassing at all rail facilities is strictly prohibited. Violators will be prosecuted. HRS Sec. 708-814**

